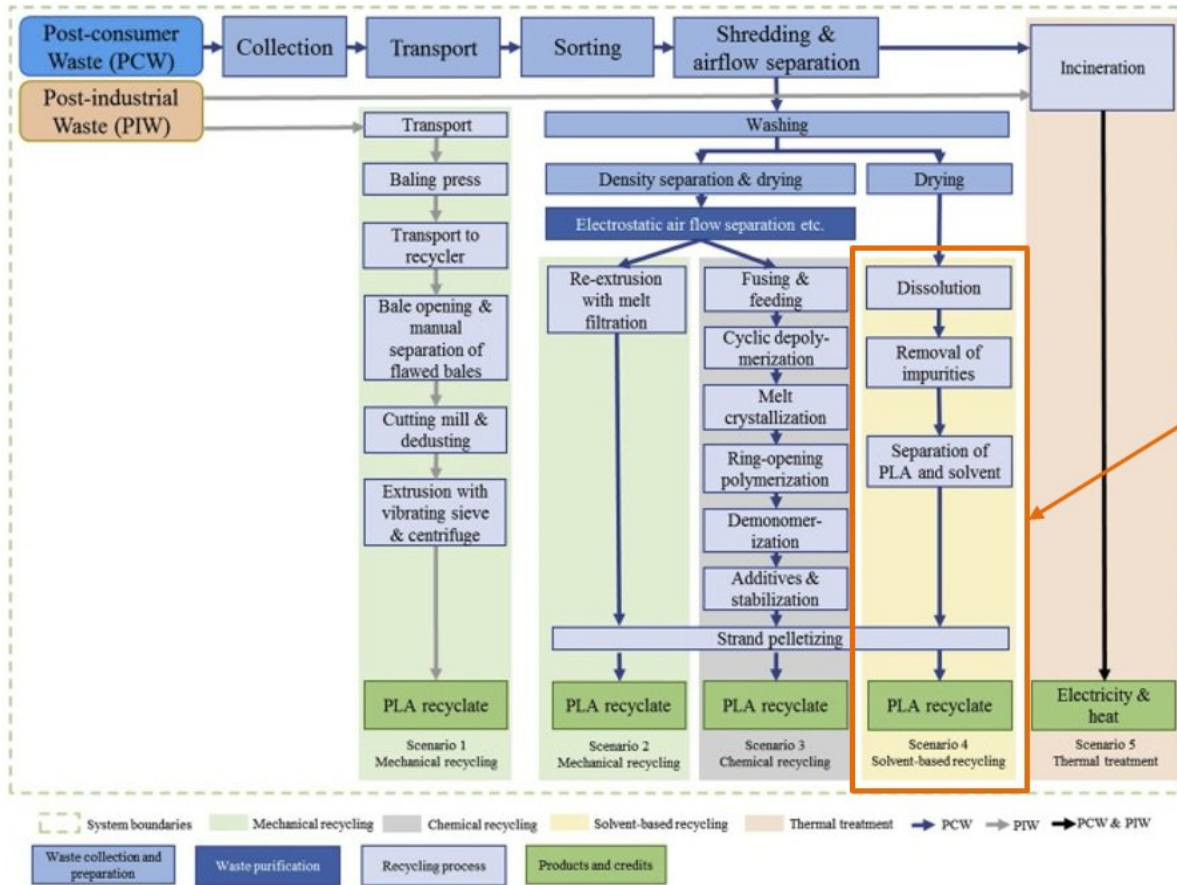
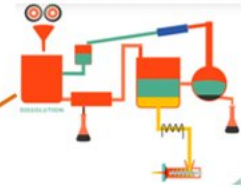


Life cycle assessment of recycling options for polylactic acid (2019)



CreaSolv® Process



RESULTS SUMMARY PLA IN THE WASTE STREAM



Process flow of investigated scenarios.

The work was funded by the German Ministry of Food and Agriculture (BMEL) within the research alliance "Sustainable recycling for products and wastes from biobased plastics" and supplements the "SustRecPLA" project "PLA in the Waste Stream".