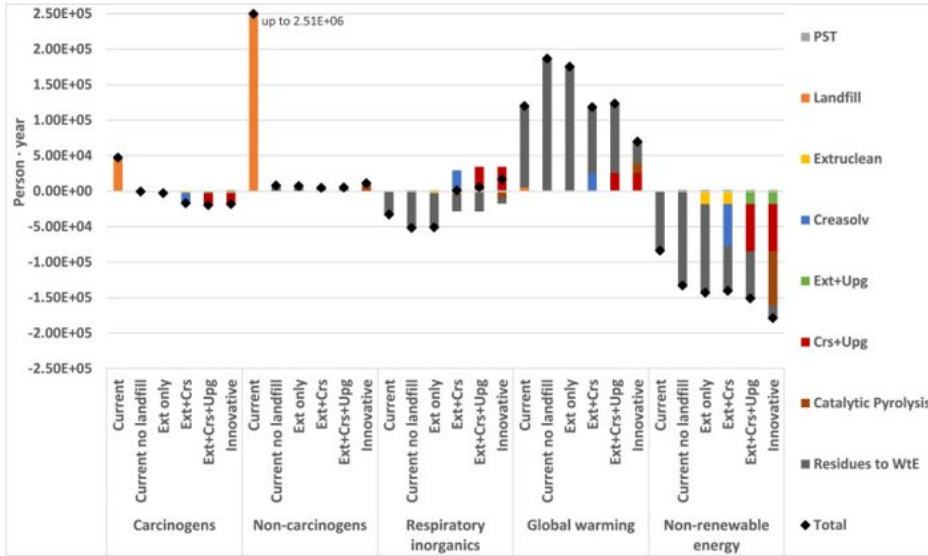


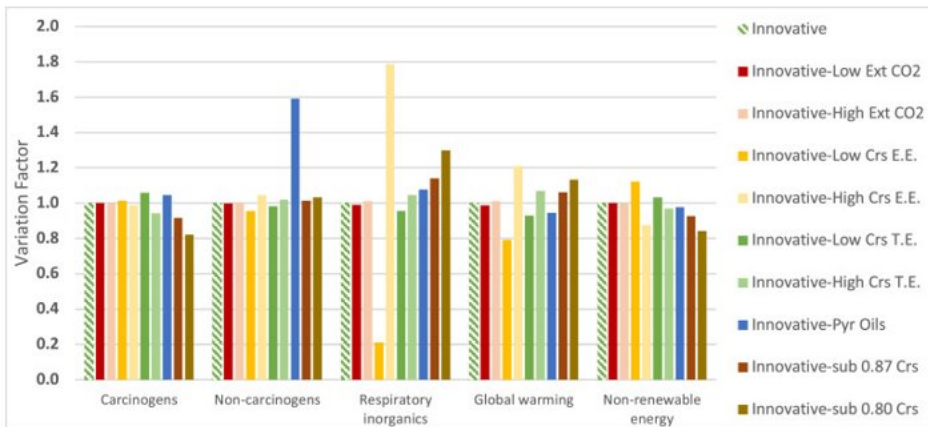
Can plastics from end-of-life vehicles be managed in a sustainable way? (2022)



Normalized results of impact assessment for the Current and Innovative scenarios, with a series of intermediate stages. Results refer to the functional unit and the main midpoint impact categories, and with the contribution of each single stage of the life cycle.

*PST = Post-Shredding Treatment;
WtE = Waste-to-Energy;
Ext = Extruclean;
Crs = CreaSolv® Process;
Upg = Plastic Upgrading.*

The shaded rhombus indicates the total value for each impact category. Results are normalized in "Person • year", i.e. the average impact in a specific category caused by a person during one year in Europe.



Sensitivity results in terms of variation factor.

- *VF = 1 indicates no variation;*
- *VF is < 1 or VF > 1 -> some variations occur;*
- *negative value of VF -> changes the potential impact from positive to negative or vice-versa.*